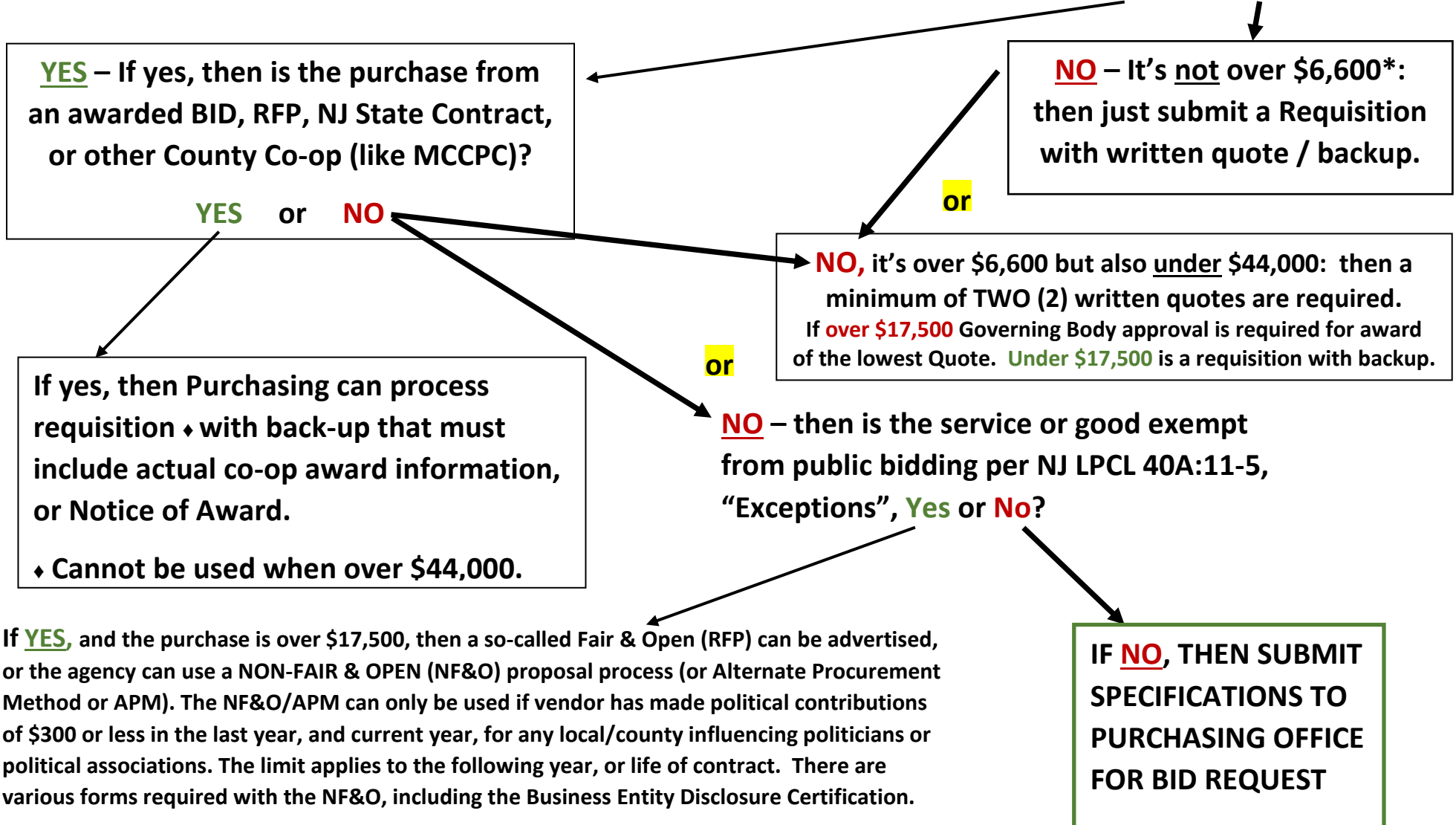


THE PUBLIC PURCHASING ROADMAP

START HERE: IS THE PURCHASE OVER THE *QUOTE THRESHOLD? (YES OR NO)



* NOTE: 15% OF THE L.P.C.L. BID THRESHOLD IS THE ACTUAL CALCULATION OF A PUBLIC ENTITY QUOTE THRESHOLD, CURRENTLY CALCULATED AT \$6,600 (\$15% of the \$44,000 BID THRESHOLD) – ANY PURCHASE AT / OVER \$44,000 REQUIRES CONTRACT!